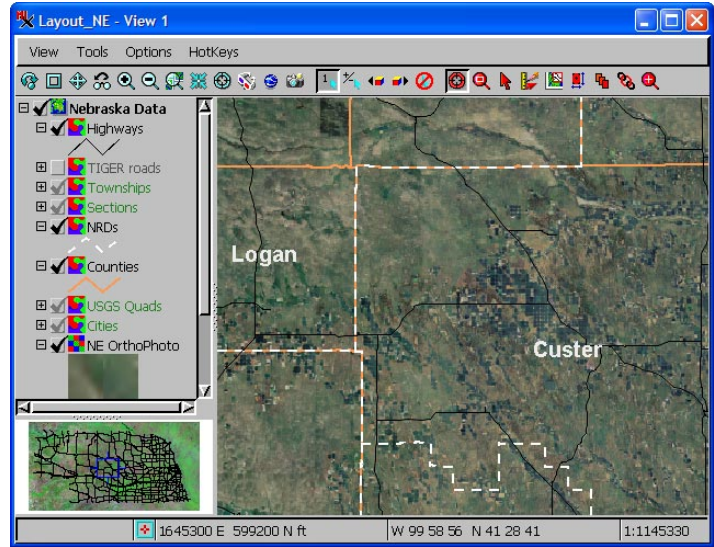


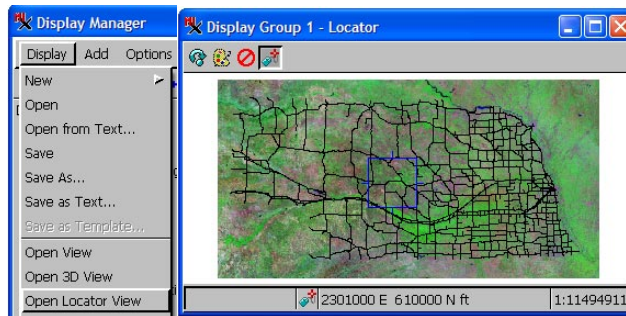
Spatial Display

Locator Reference View Manages Zoom and Position

The TNT Spatial Display process offers a Locator view to show you where you are within the full extents of the layers in the current group or layout and to assist you in moving the area viewed around when zoomed in. You can have a Locator view open at the left of any regular View window below the Legend and/or you can open a separate Locator window. The Locator at the bottom of the Legend is turned on/off from the Options menu in the View window. The Show Locator option is available only if the Legend is showing, which means the Show Legend option is also turned on. You can adjust the width of the Locator and Legend with the separator bar at their right and adjust the relative proportions of the Legend and Locator using the separator bar between them.

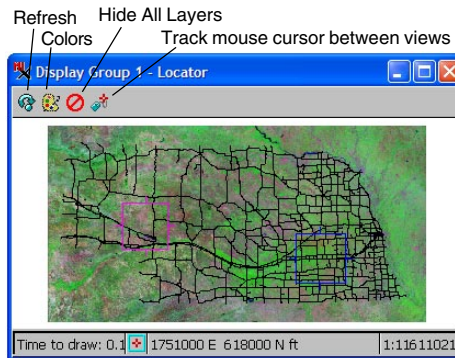
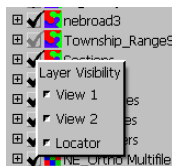


In addition to, or as an alternative to, the Locator below the Legend, you can open a separate Locator window using Display/Open Locator View in the Display Manager window. Use the elastic box in the Locator to define the extents of your view. This box can be resized and repositioned to change what is shown in the View window to match the new extents and position of the box. Simply right-click to get the main View window to redraw to reflect changes made in the separate Locator View. The redraw is automatic with the integral Locator.



Open the separate Locator View from the Display Manager. If you have more than one layout or group displayed in separate windows, the Locator View will open for the active display.

The Locator View opens with the full extents of all the layers you have added to your display. All layers are on by default in the Locator, however, map scale display controls are observed in the locator, so some layers may be off by map scale. You can turn individual layers on/off for the Locator(s) independently of the layers shown in the main View. The visible layers for the Legend and separate Locator window(s) are the same. To change individual layer visibility in the Locator, right-click on the Show/Hide checkbox for the layer in the Legend or the Display Manager. If the check in the box is dimmed in the Display Manager, it indicates that the layer is off in one or more main views or in the Locator(s) or it may be off by map scale. The check in the box in the Legend reflects the state of the layer in that view only.



If you have more than one View open for the active display, one rectangle indicating the extents currently in each View is shown. The blue rectangle indicates which of the Views the cursor is in (if over View window) or which of the Views will be resized/repositioned if over the Locator.

Boxes in the Locator view are either blue or magenta. A blue box indicates the active Locator box. A box is active if the cursor is over the corresponding view canvas or the cursor is over the Locator and closest to this box, which means it will be the one resized and/or moved.

The buttons at the top of the separate Locator view let you refresh the view, set its background color, hide all layers in the Locator (to make it easier to choose to show just a few when many layers are present) and turn on cursor tracking between the Locator and main view.