

# Combining Local/Web Maps

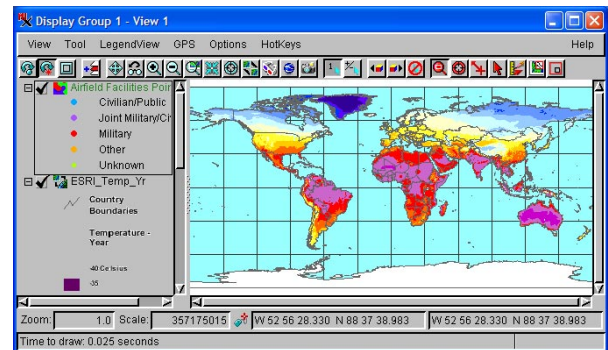
In addition to supporting display of any combination of raster, vector, shape, CAD, TIN, and pinmap objects, the Spatial Display process lets you select layers published by any Web Map Service (WMS) or ArcIMS to combine with your local layers. The Spatial Editor lets you use WMS and ArcIMS layers as reference layers when creating and editing your own spatial data. MicroImages maintains catalogs of available WMS (>900,000) and ArcIMS (>400,000) layers. The search capabilities enable you to quickly select from this multitude of layers using text or geographic area as your search criterion.

## Combining Local/Web Map Highlights:

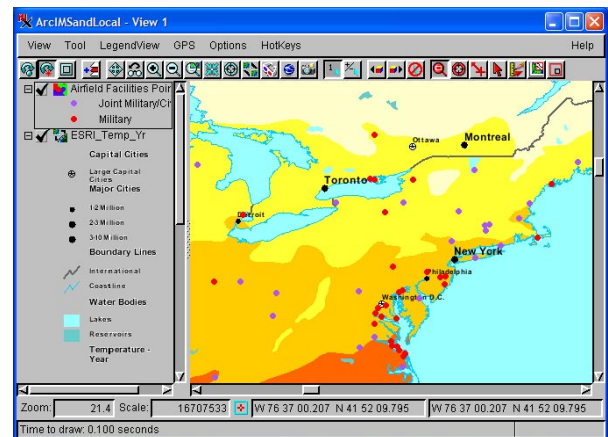
- Combine WMS, ArcIMS, and local layers in a single display
- Use all Display tools, such as sketching, measuring, and GPS tracking, with WMS and ArcIMS layers
- Choose from more than 900,000 WMS layers and 400,000 ArcIMS layers to build your own custom displays
- Search sites for text or by geographic extents
- Extents of layers in current view automatically entered for geographic extents search
- Sort search results alphabetically or by ground area
- Search servers, layers, or both
- Search uses catalogs posted on MicroImages web site so the latest catalog is always used
- Layer Controls for WMS and ArcIMS layers let you choose from all layers offered by the selected service, which are then composited into a single display layer
- Save your own list of favorite sites
- View URL for each service as DataTip
- Choose to view with or without relief shading if available as an image dimension
- Choose between anaglyph and other 3D stereo viewing modes for layers where available

## Display Layers in Google Earth

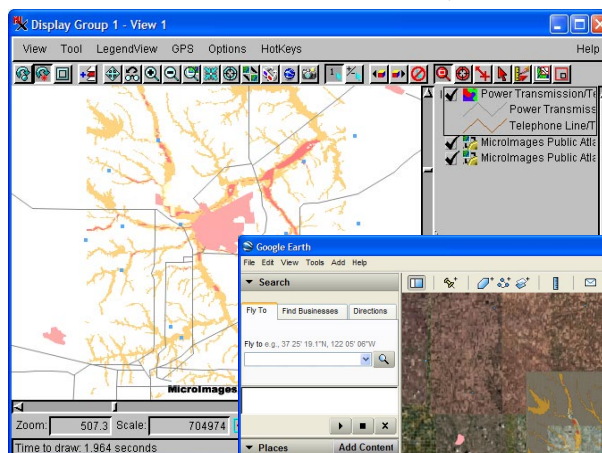
Any layer you can display in the TNT products, including WMS and ArcIMS layers, can be sent as a snapshot or a complete geodata layer for display as a Temporary Place ground overlay in Google Earth. Non-georeferenced layers, such as logos, are rendered as screen overlays.



ArcIMS and local vector layer



Same layers as above but more components showing (map scale display controls for local and ArcIMS layers)



WMS and local layers in Spatial Display (left) and Google Earth (below)

